

Washington County Watershed Alliance

Datalogger Monitoring Project

Washington County Watershed Alliance Background

- Formed in 1998, became an incorporated non-profit in 2001
- All-volunteer organization
- Umbrella organization for all Washington County Watershed Associations (fiscal agent)
- Board composed of Watershed Association representatives, County Conservation District Rep, and 3 At-Large Members (not involved in a specific watershed)

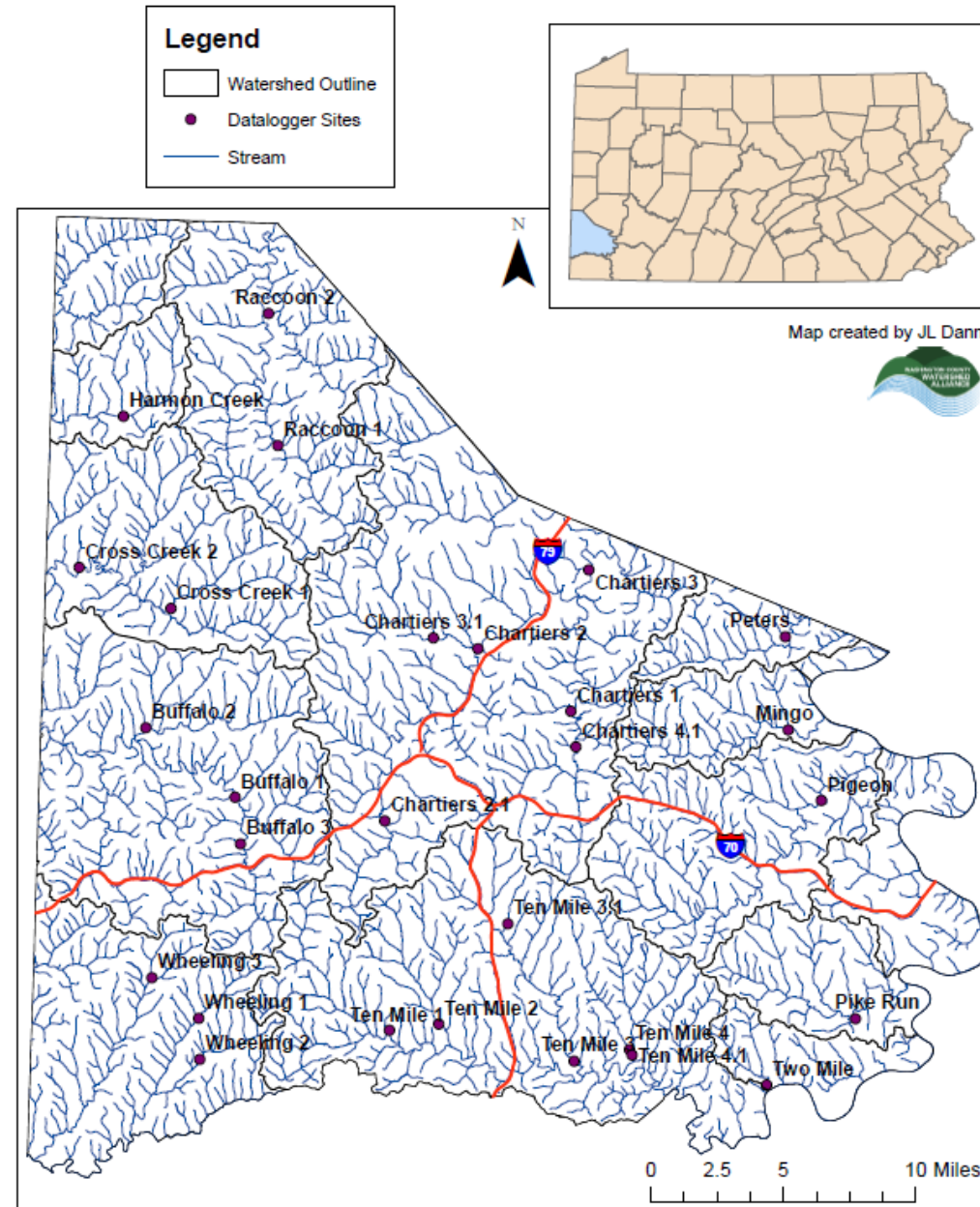
County-Wide Datalogger Project

- Began in 2011
- Completed in 2020
- Solinst Levelogger LTC Jr. devices used
- Project ran 25 dataloggers throughout the county



- Downloaded each month by students
- Worked with students from three Universities:
 - California University of PA
 - Washington & Jefferson College
 - West Liberty University (WV)
- 14 students participated in the project over the course of 9 years

WCWA Datalogger Monitoring Sites



Lessons Learned

- Positive Outcomes
 - Loads of baseline data
 - Great connection with University partners
 - Longest running stream project for the WCWA

- Room for Improvement
 - Downloading once a month led to issues
 - Device functionality and lifespan
 - Avalanche of data

Questions?

Thank you and feel free to contact me at jdann@pawccd.org if you have further questions