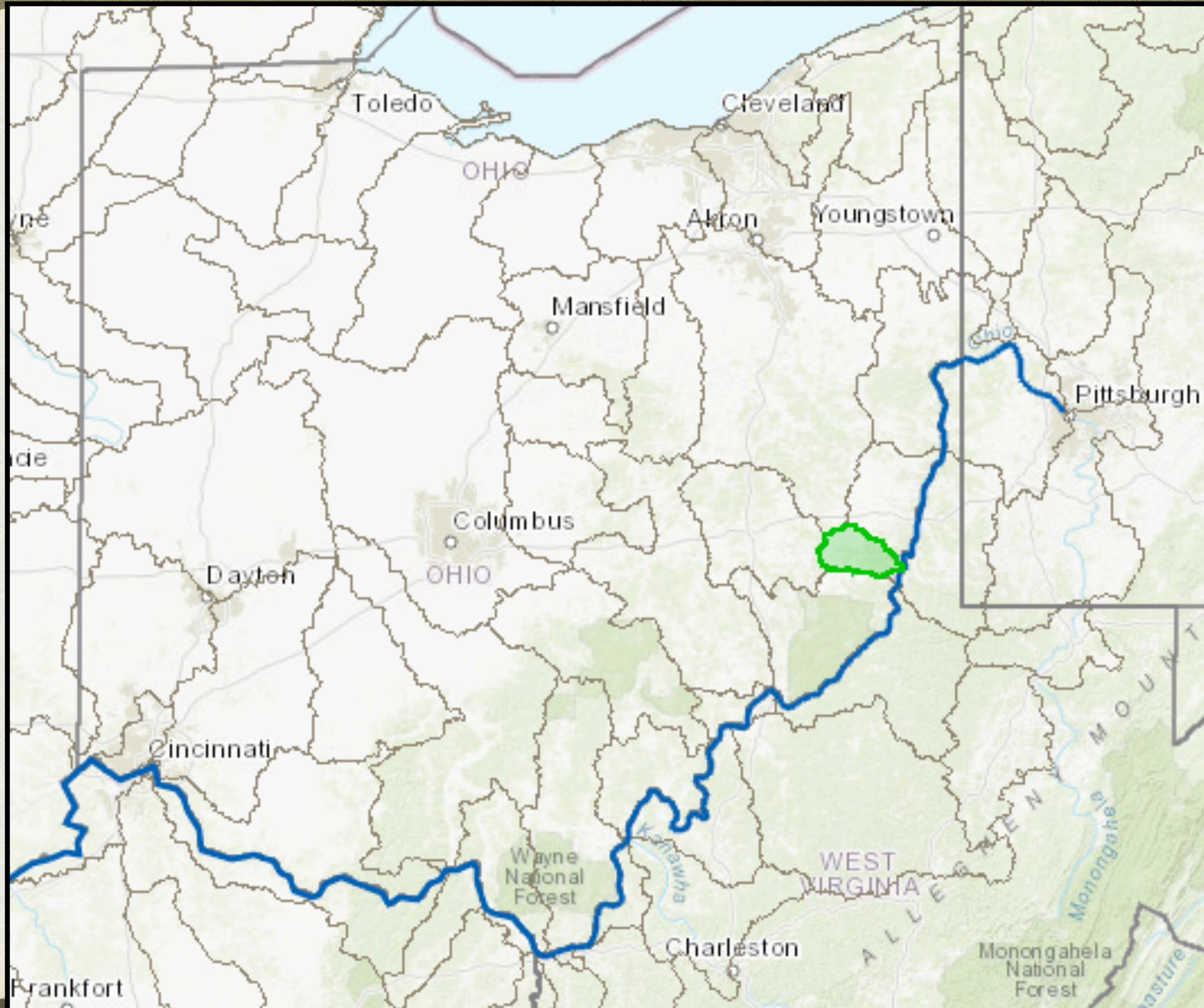


CAPTINA CREEK WATERSHED



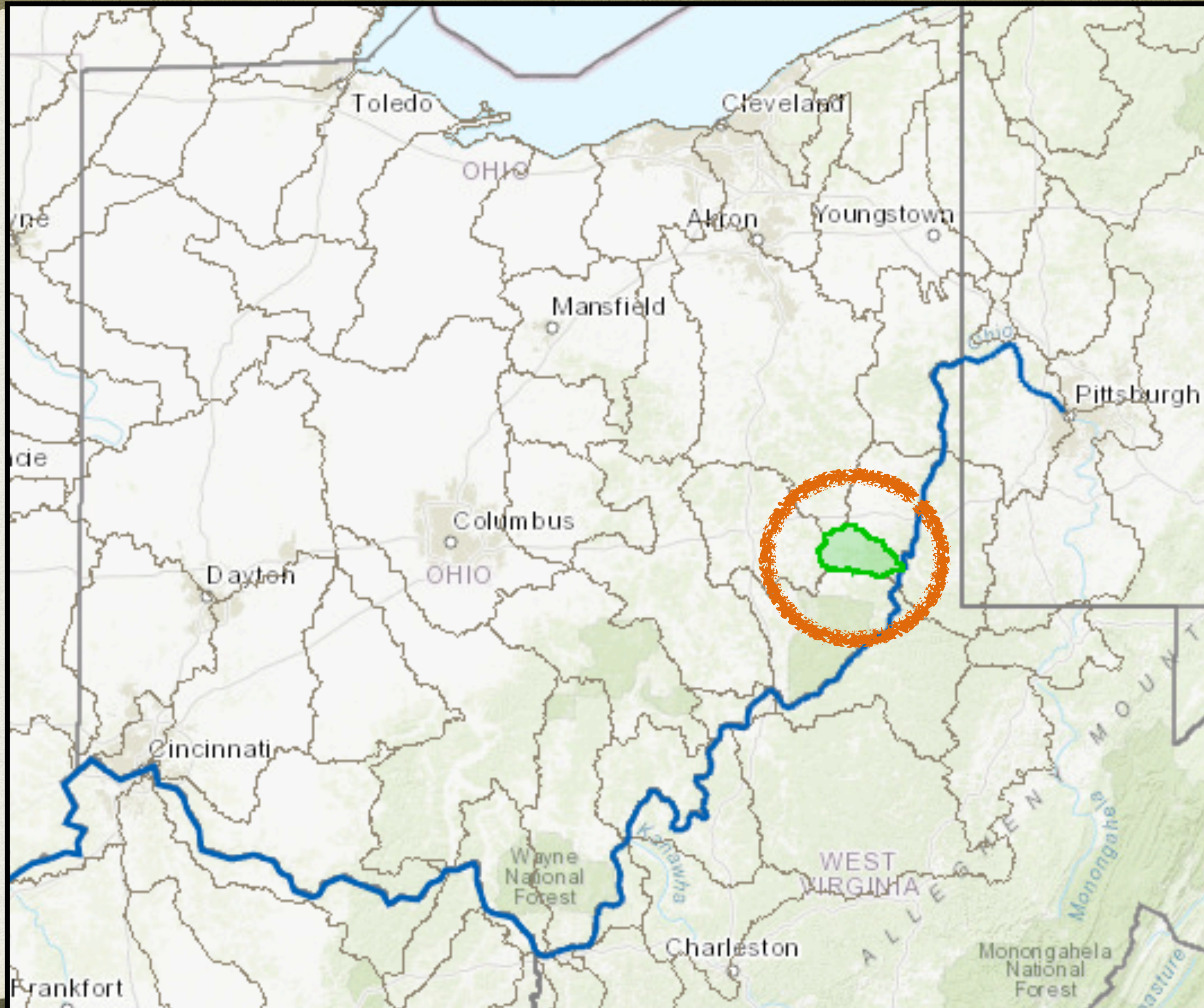
Ellie Ewing, Executive Director
Abbey Hayward, Volunteer

BACKGROUND



- Located in southern east central Ohio
- Captina Conservancy formed in 2010
- Volunteers with one paid Executive Director
- 1700 acres in easements
- Strong partnerships

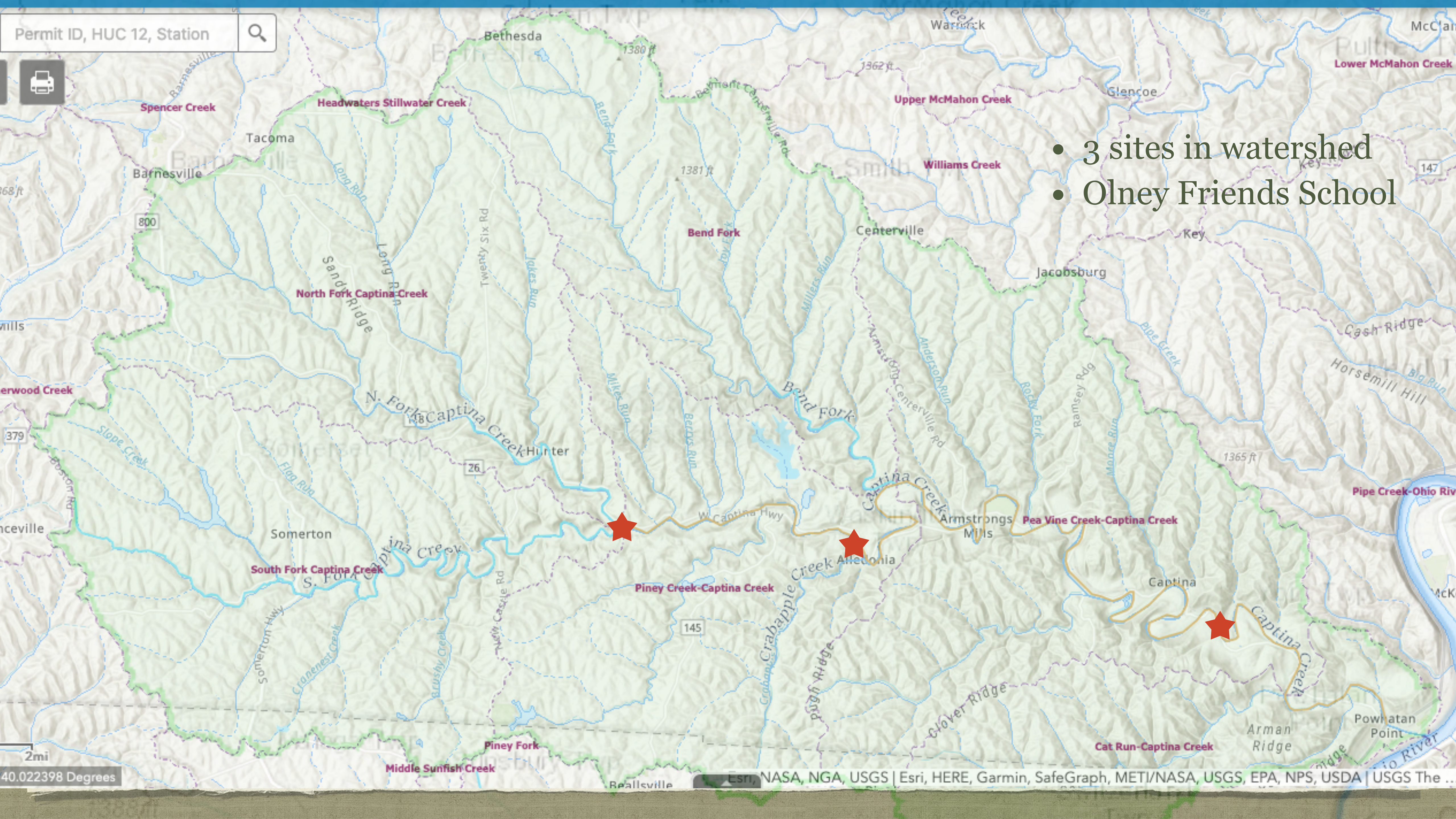
BACKGROUND



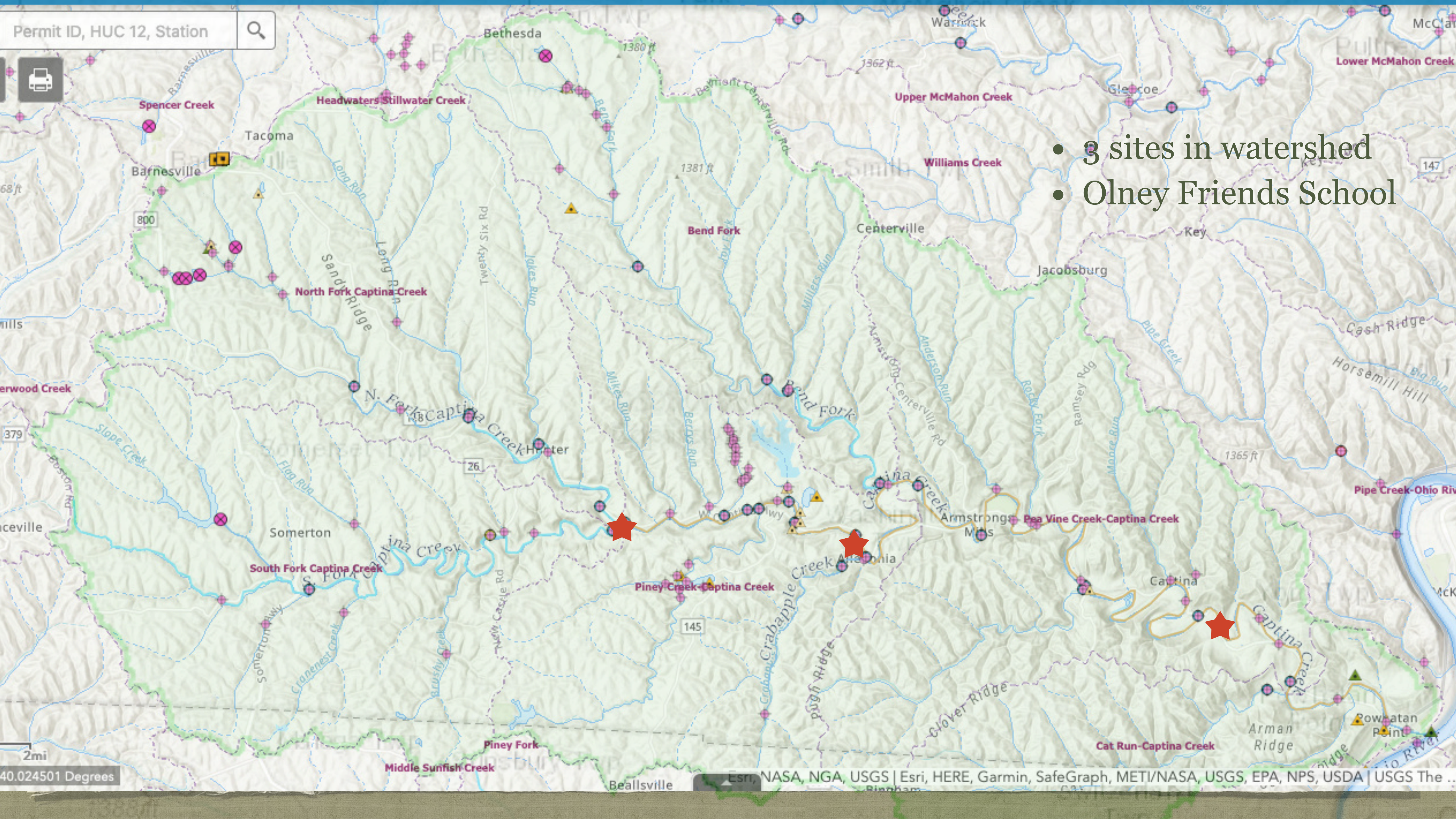
- Located in southern east central Ohio
- Captina Conservancy formed in 2010
- Volunteers with one paid Executive Director
- 1700 acres in easements
- Strong partnerships



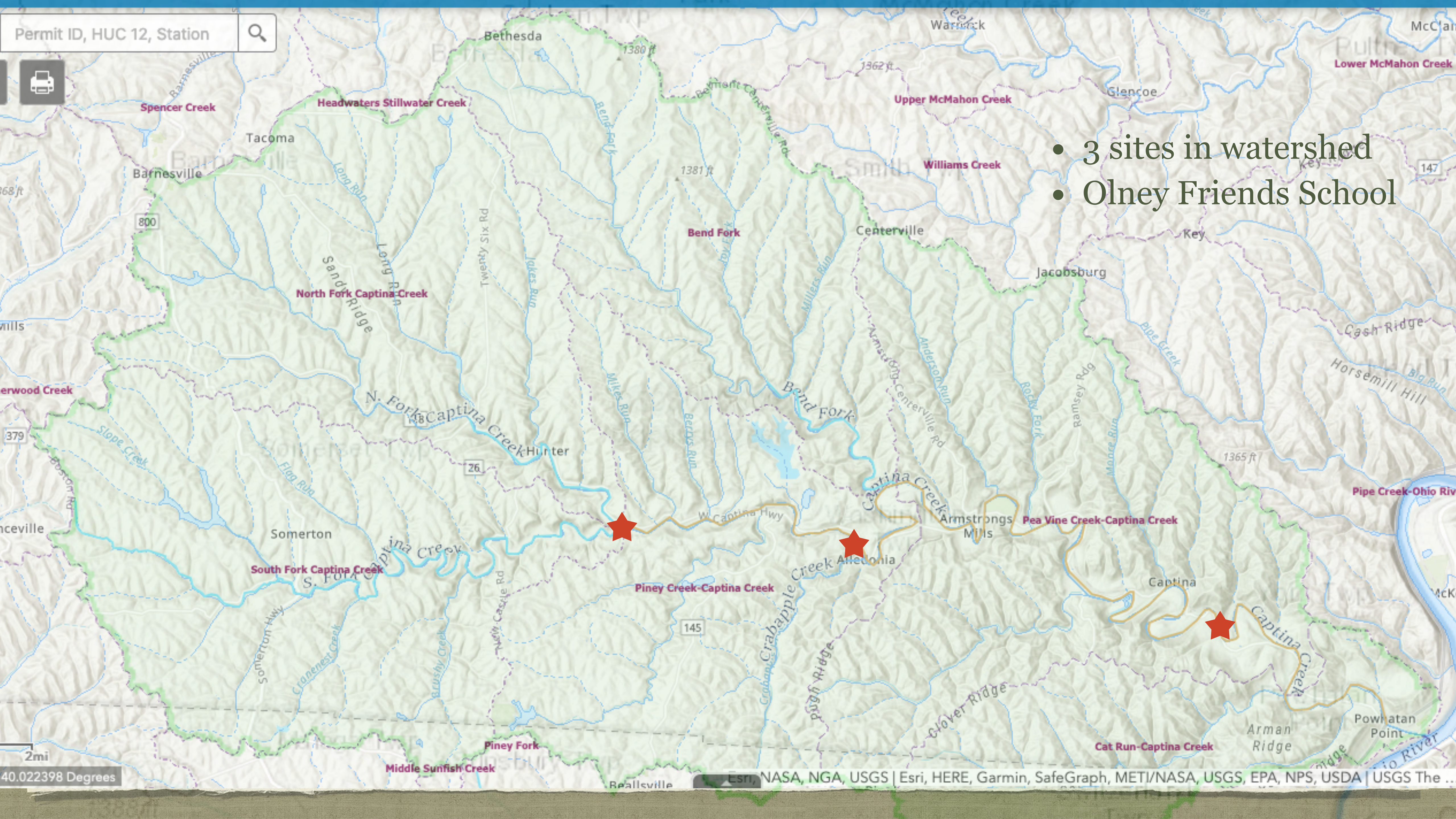
- 3 sites in watershed
- Olney Friends School



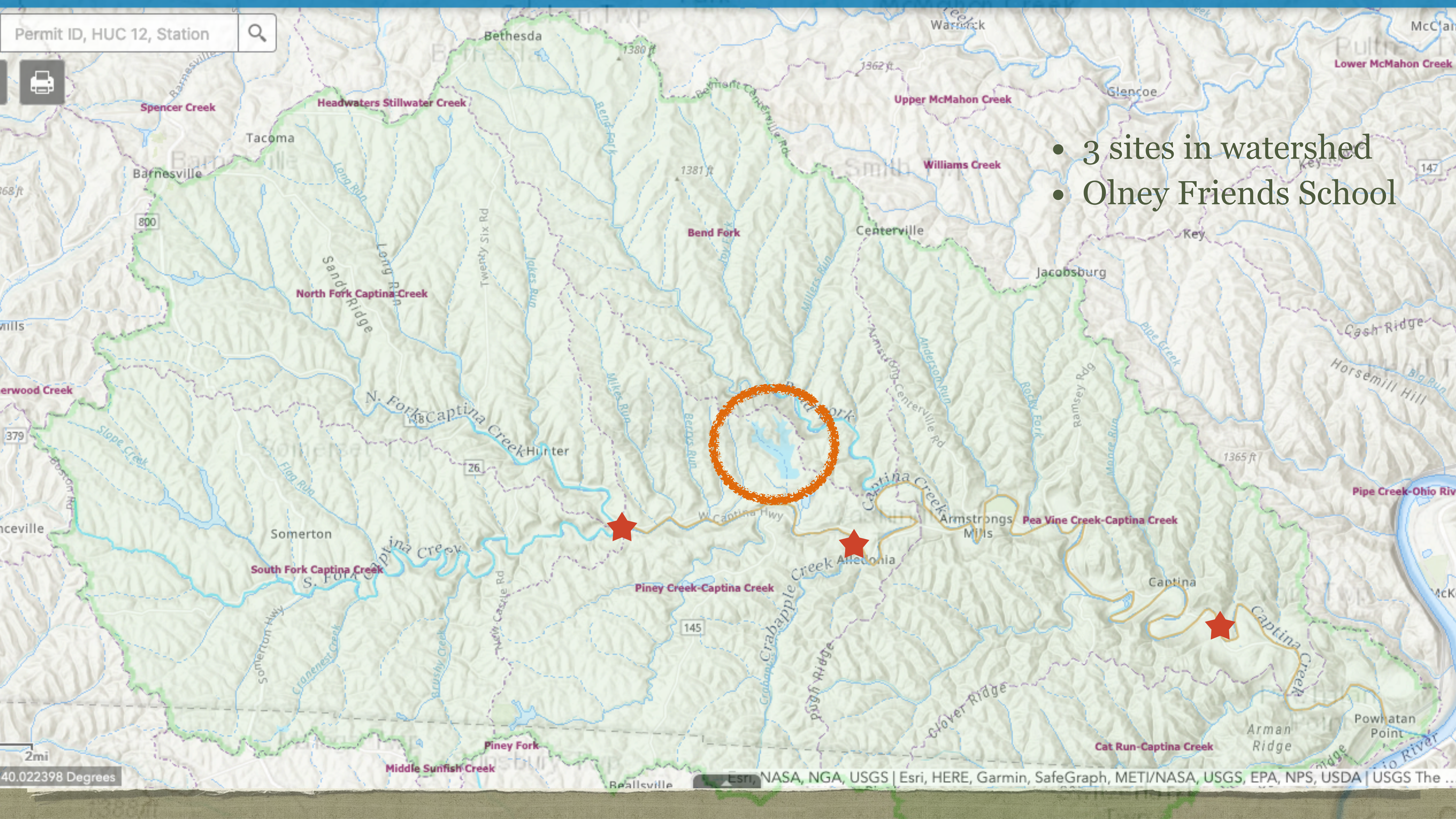
- 3 sites in watershed
- Olney Friends School



- 3 sites in watershed
- Olney Friends School



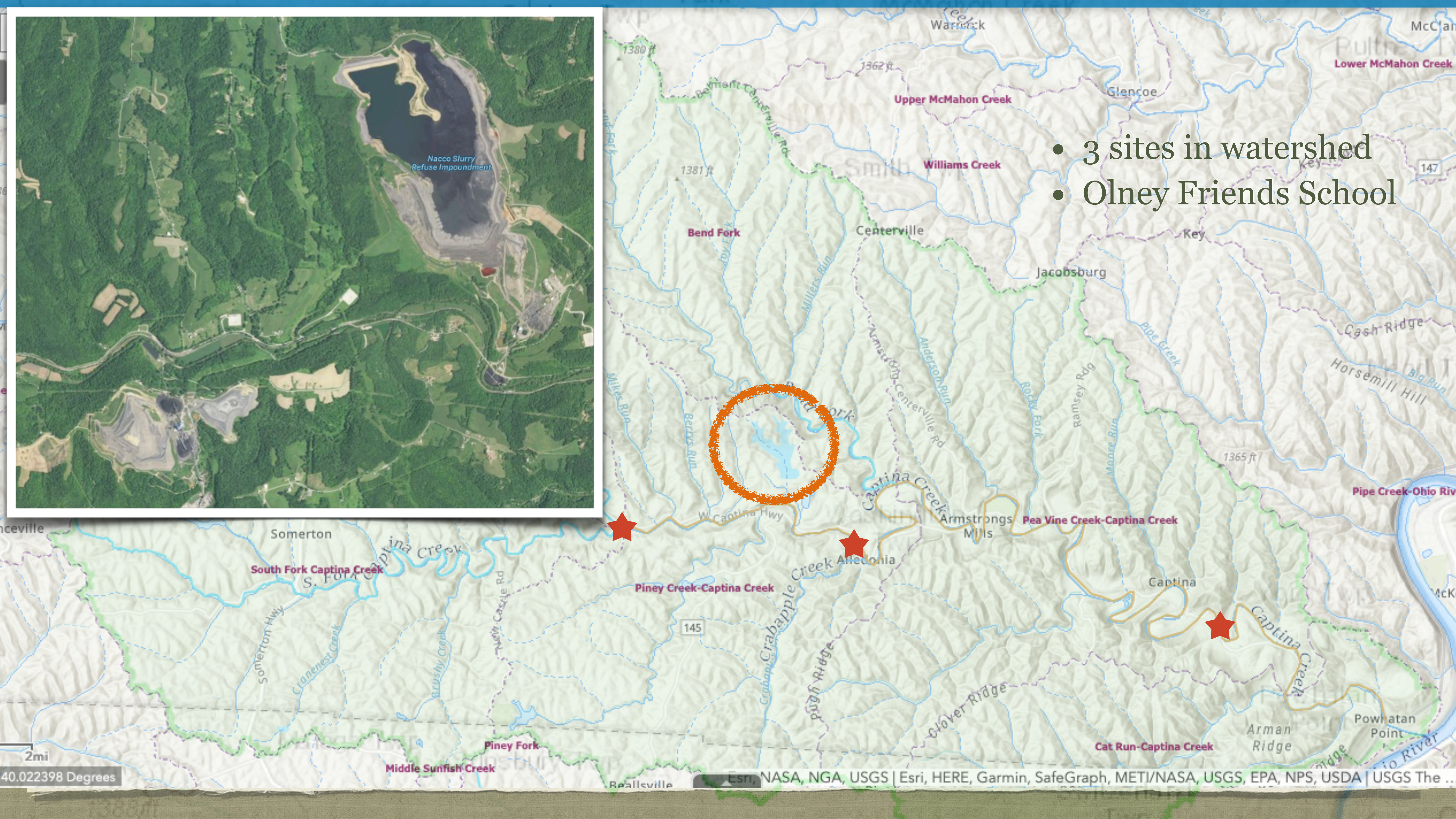
- 3 sites in watershed
- Olney Friends School

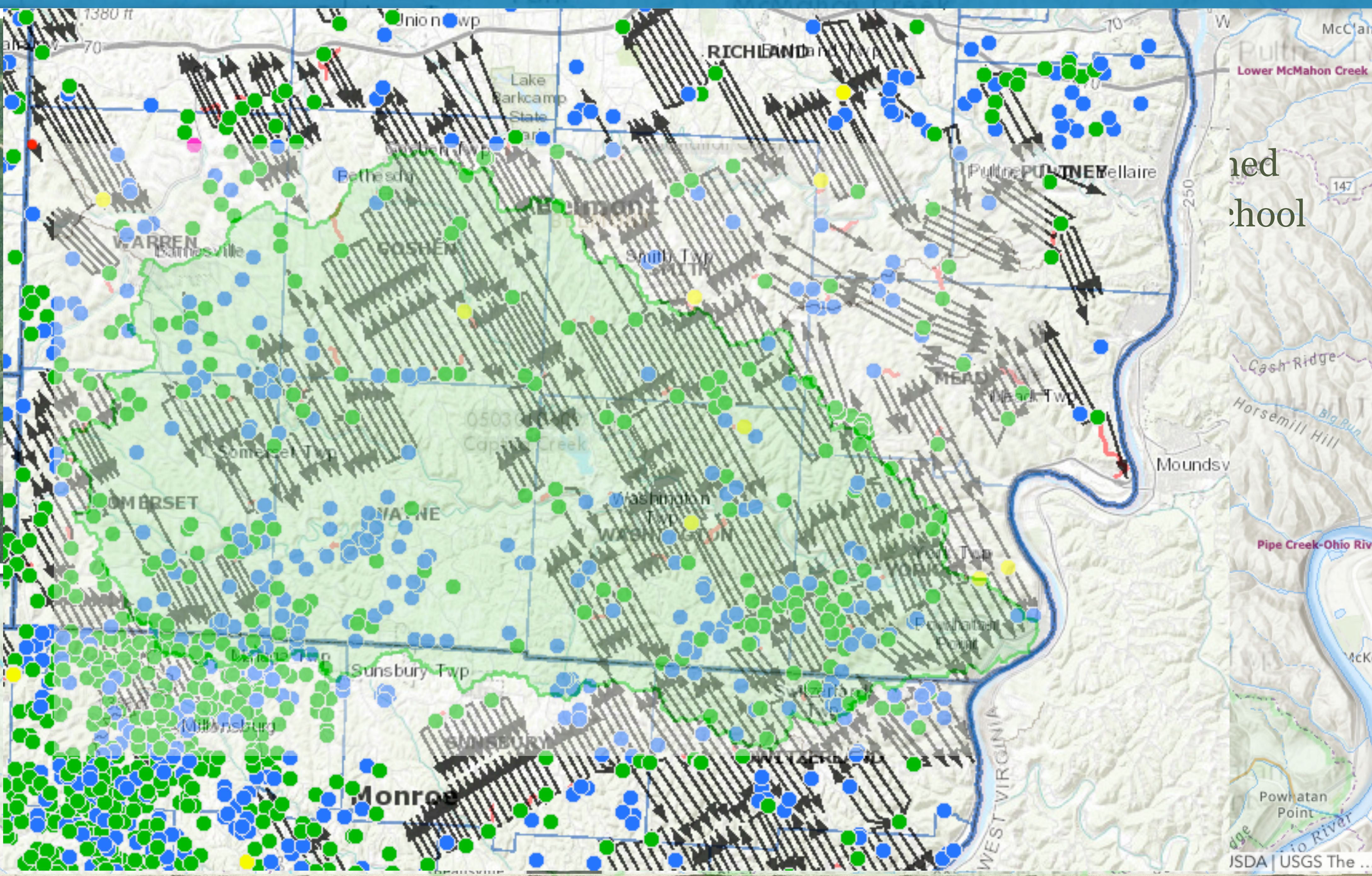
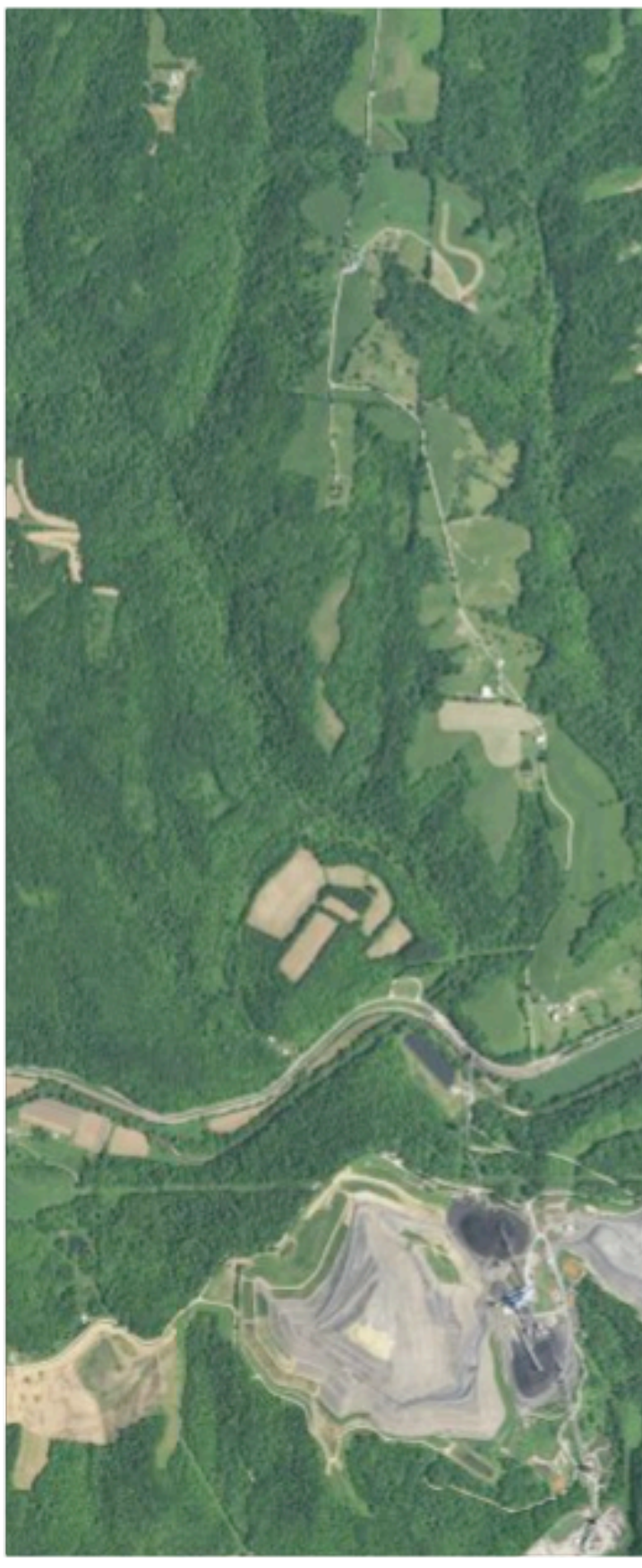


- 3 sites in watershed
- Olney Friends School



- 3 sites in watershed
- Olney Friends School

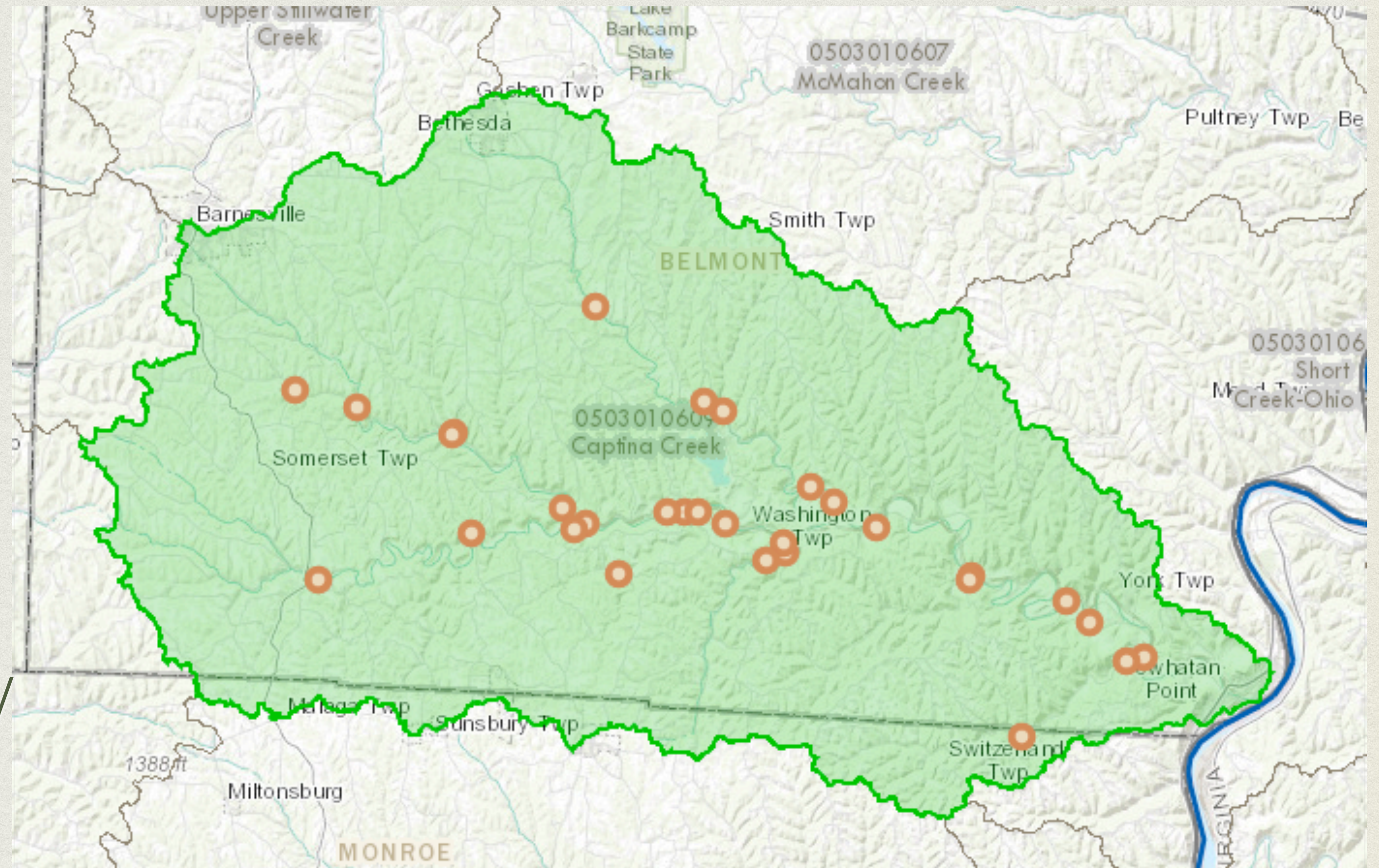




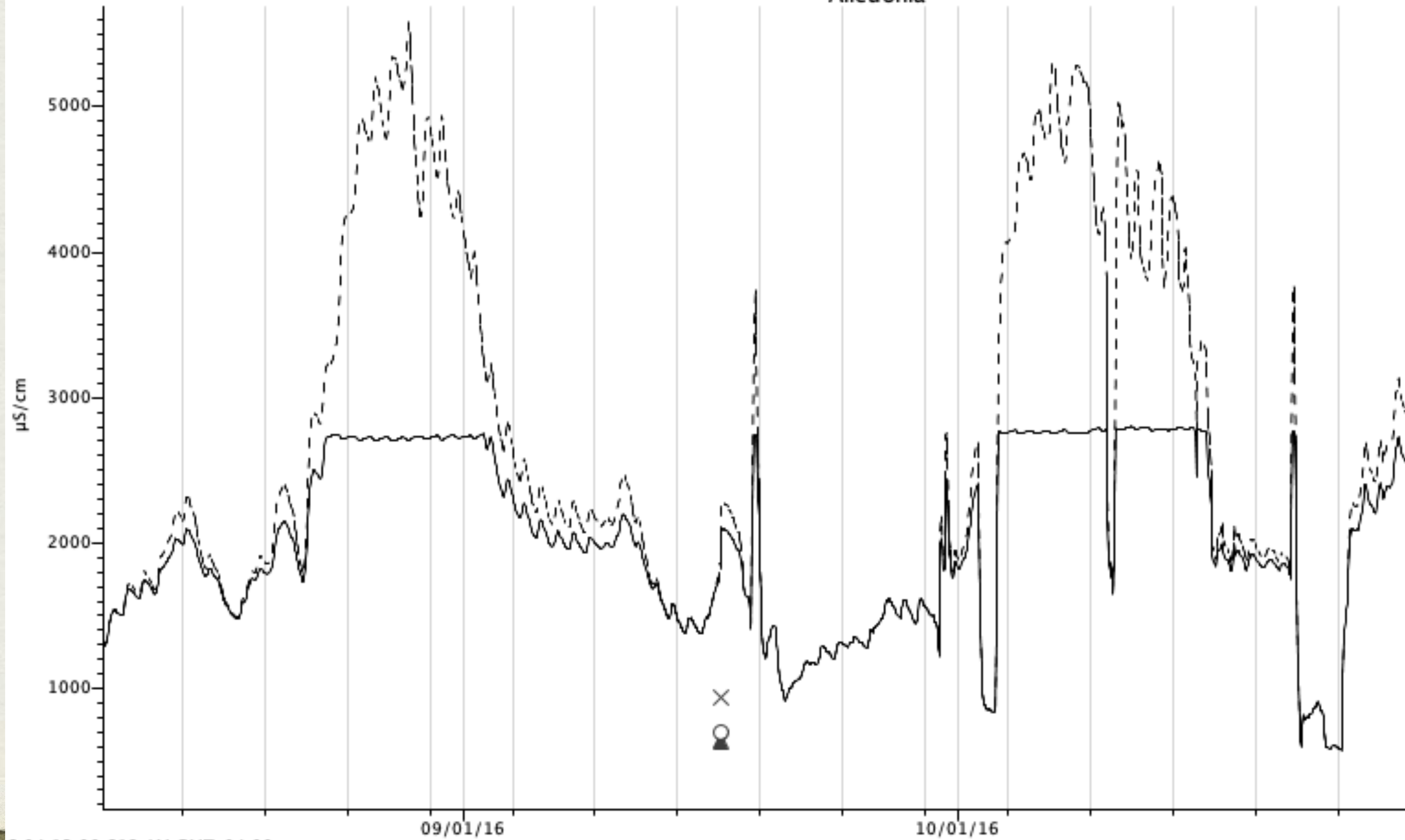
ed
chool

MORE MONITORING

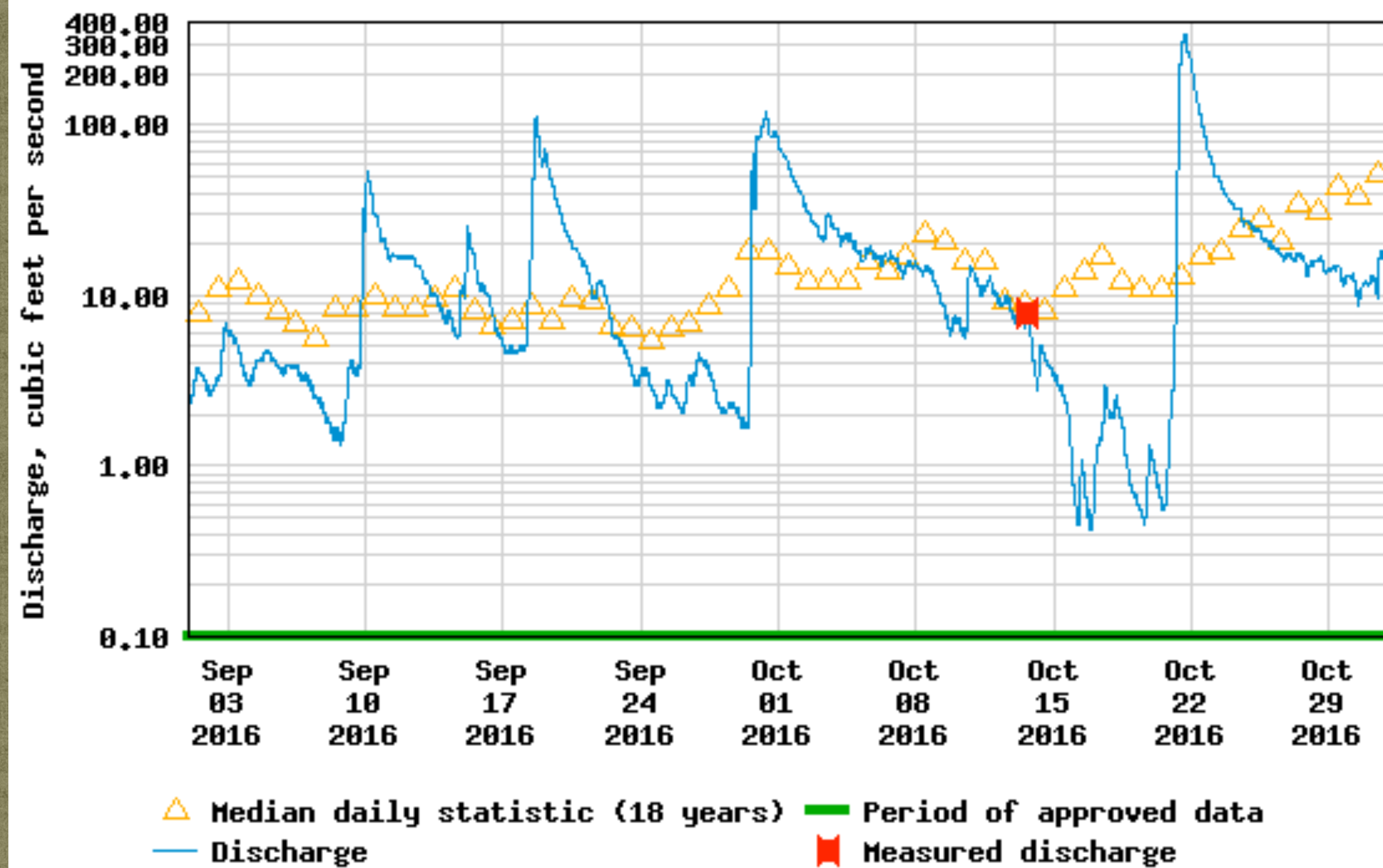
- Partner at SWCD
- Volunteer program, aligned with OEPA sites
- Ohio University Voinovich School Watershed Data
- <http://www.watersheddata.com/map/map.aspx?WaterShed=CT1>



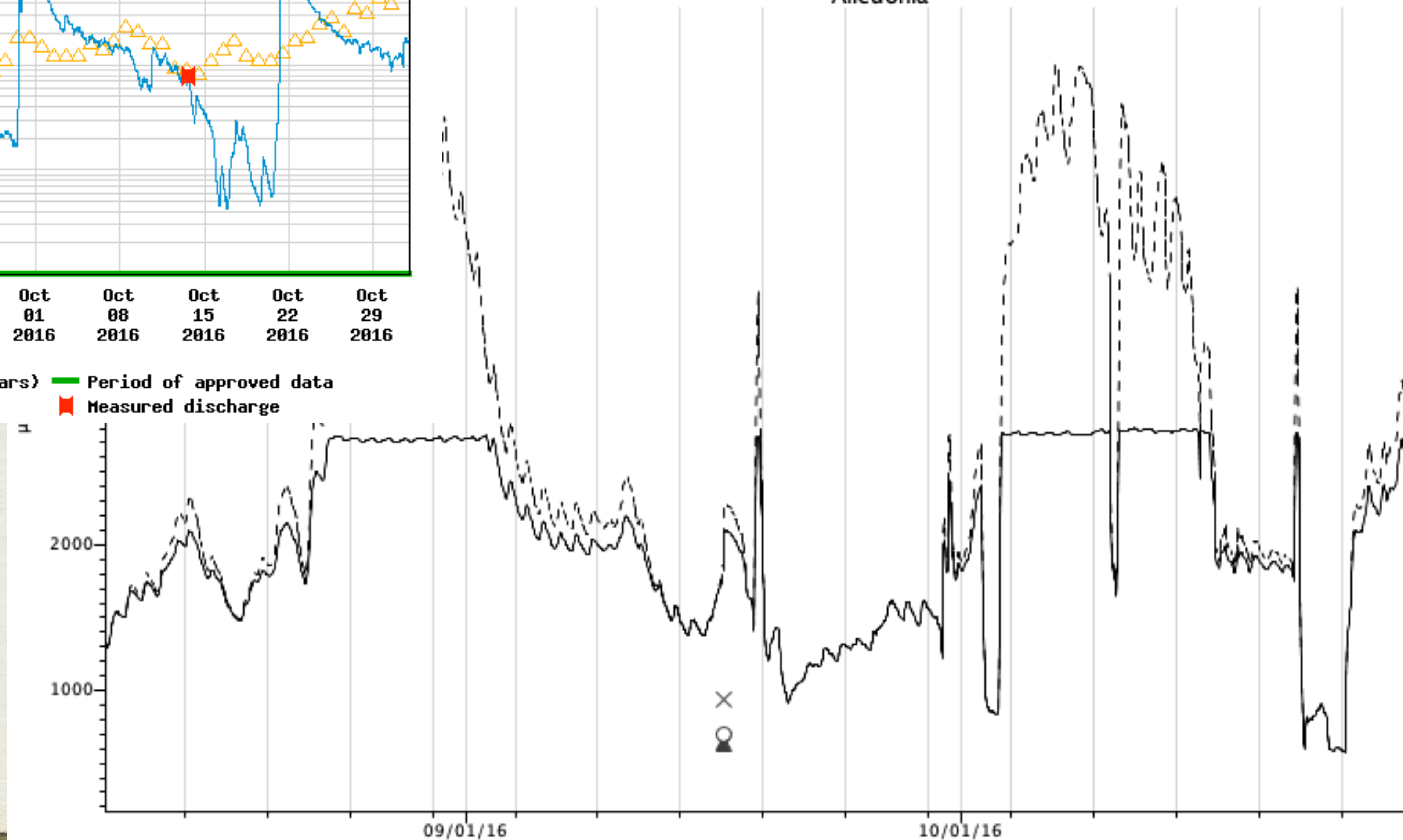
Alledonia



USGS 03113990 Captina Creek at S.R. 148 at Armstrongs Mills OH



Alledonia



6 04:13:09.612 AM GMT-04:00

USGS 03113990 Captina Creek at S.R. 148 at Armstrongs Mills OH

