



Mountain
Watershed Association

YOUGHIOGHENY RIVERKEEPER®

protecting, preserving, restoring...



WATERKEEPER® ALLIANCE
MEMBER



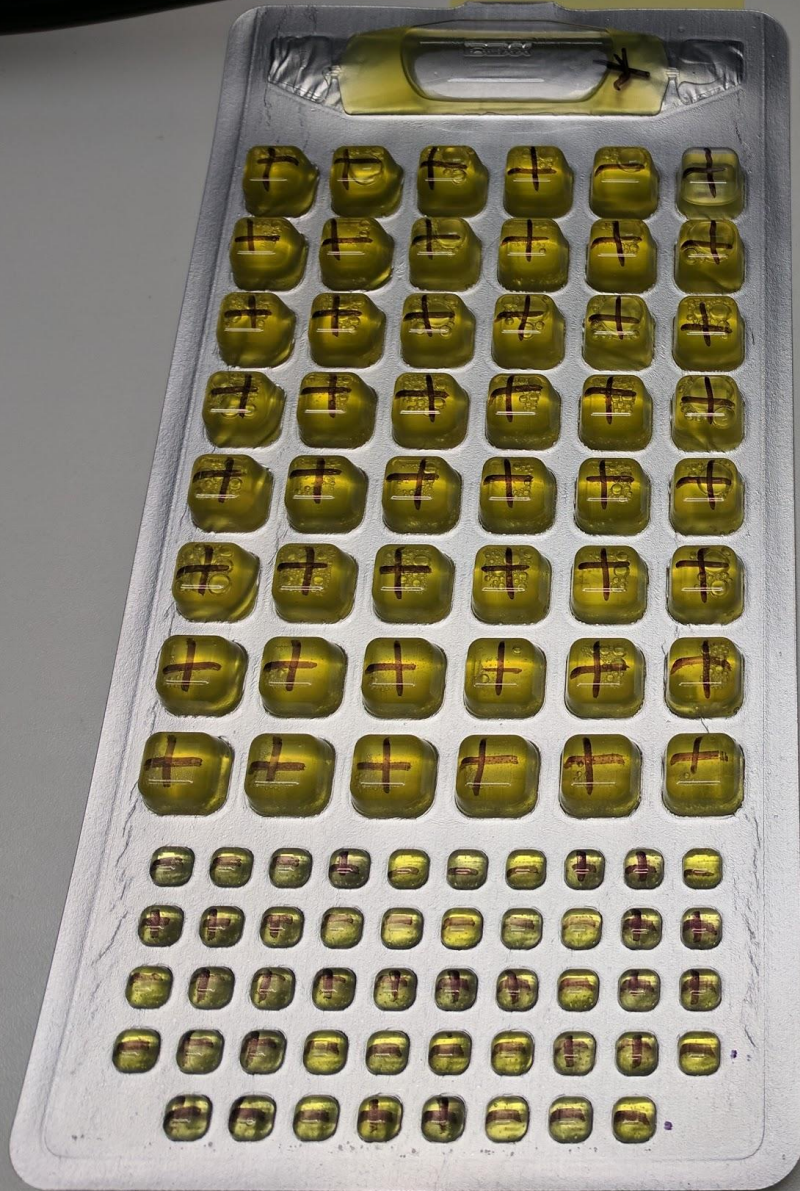
WATERKEEPER[®] ALLIANCE







Upstream



Downstream



Swimmable Waters

We test 13 popular swimming, wading and paddling spots around the watershed for E. coli weekly between May 1 and September 30.

107

**samples met water
quality standards at
least 95% of the time**

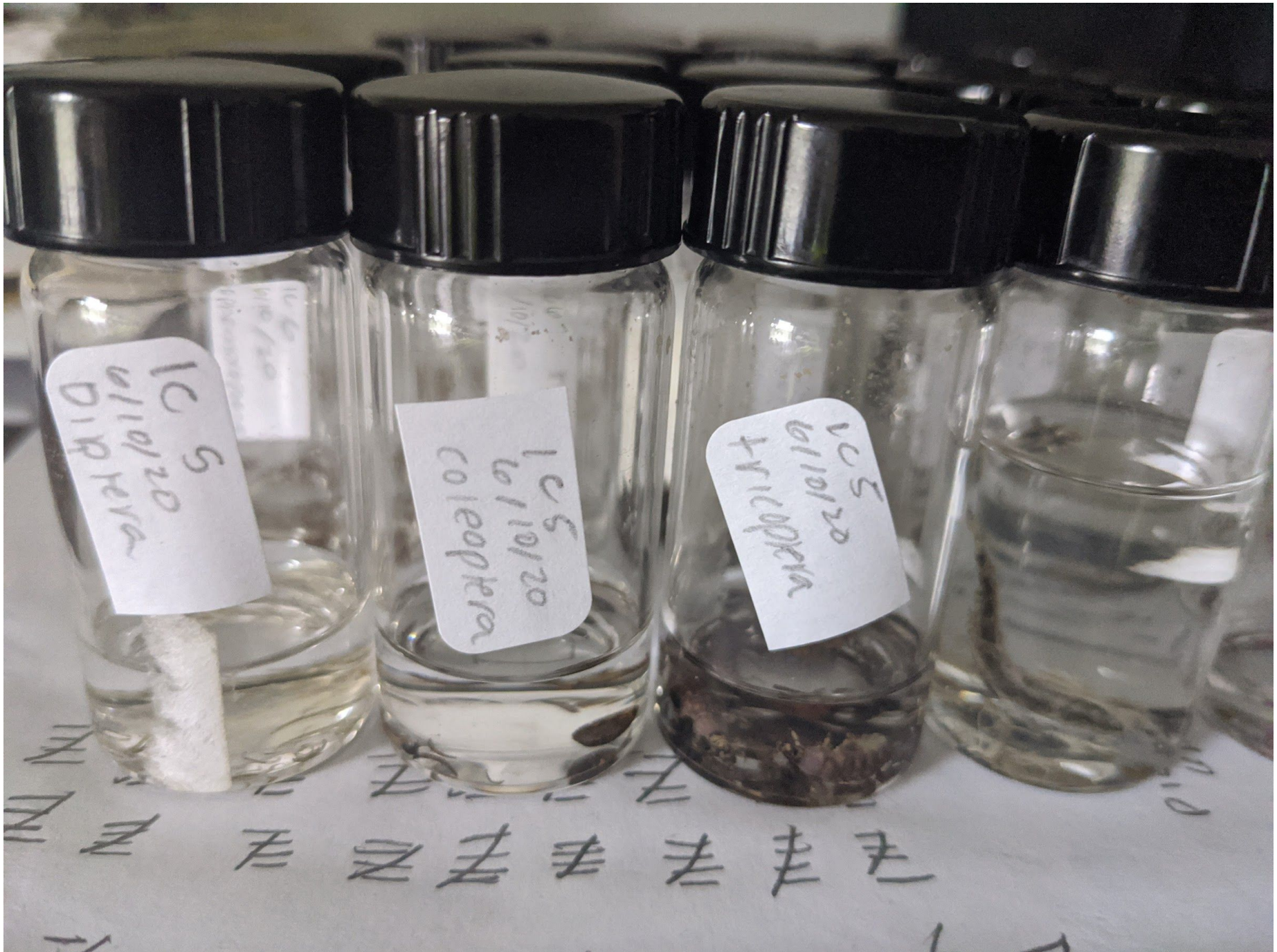
67

**samples met water
quality standards less
than 60% of the time**









VC 5
6/11/20
DIPPERA

VC 5
6/11/20
COLEOPTERA

VC 5
6/11/20
HYMENOPTERA

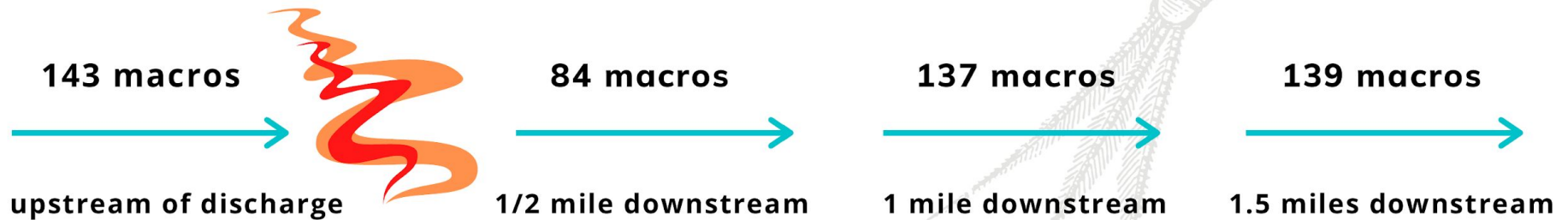
Handwritten notes on the surface below the vials, including the word "DIPPERA" and several checkmarks.

The number of macro samples we collected this year is down from an average year. This Spring, water levels remained too high for sampling within the collection season.

21

**macro samples
collected at
17 sites**

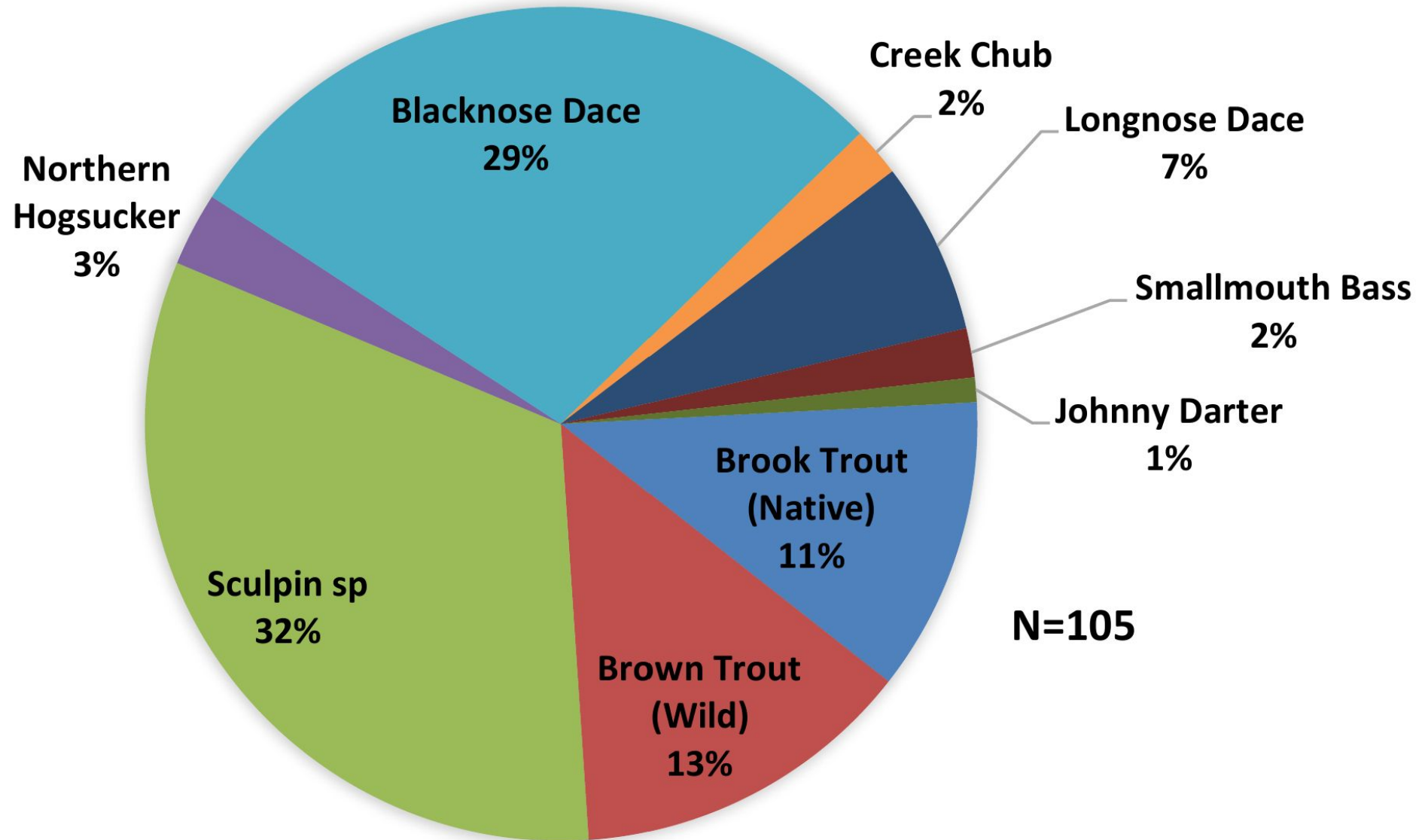
When the rogue discharge at Sagamore blew out this summer, MWA started conducting water samples and macroinvertebrate surveys to document impacts to the aquatic health. Samples were collected both upstream and downstream of the discharge.



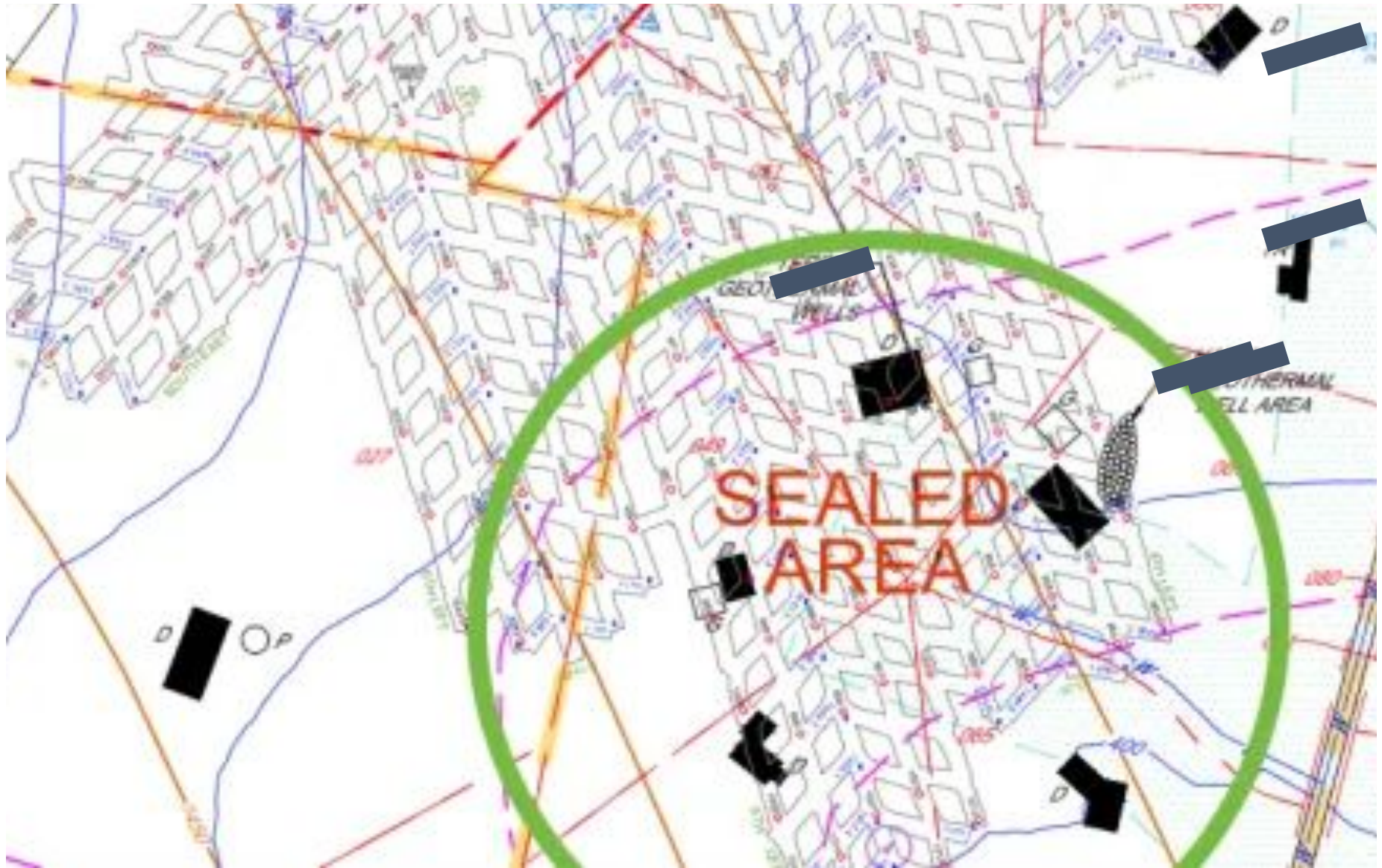
The area directly below the discharge was impacted the most but as the aluminum and iron dissipated through dilution so did the impacts to the aquatic life.

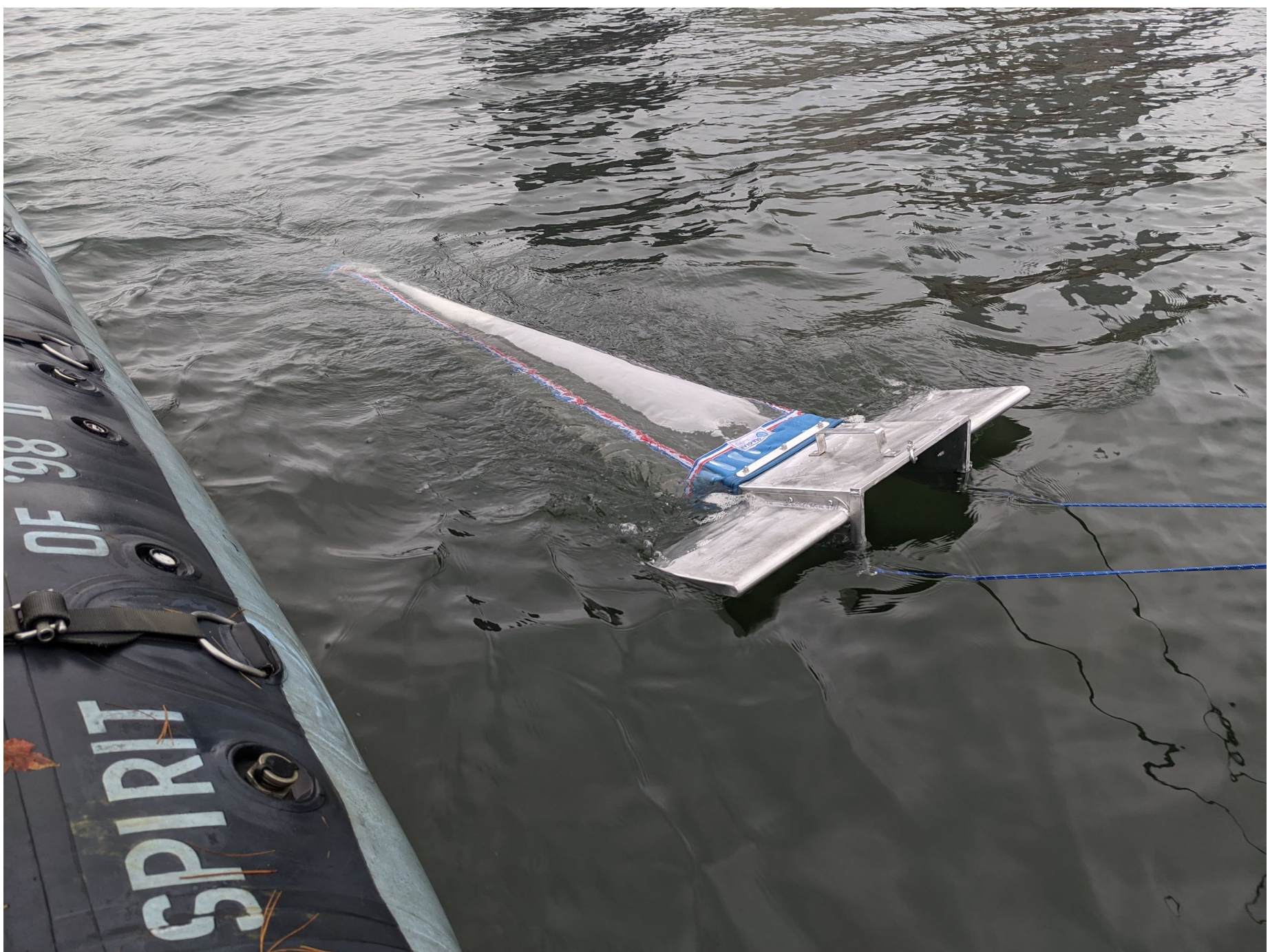


FISH COMMUNITY AT CAMP RUN (% OF TOTAL CATCH)





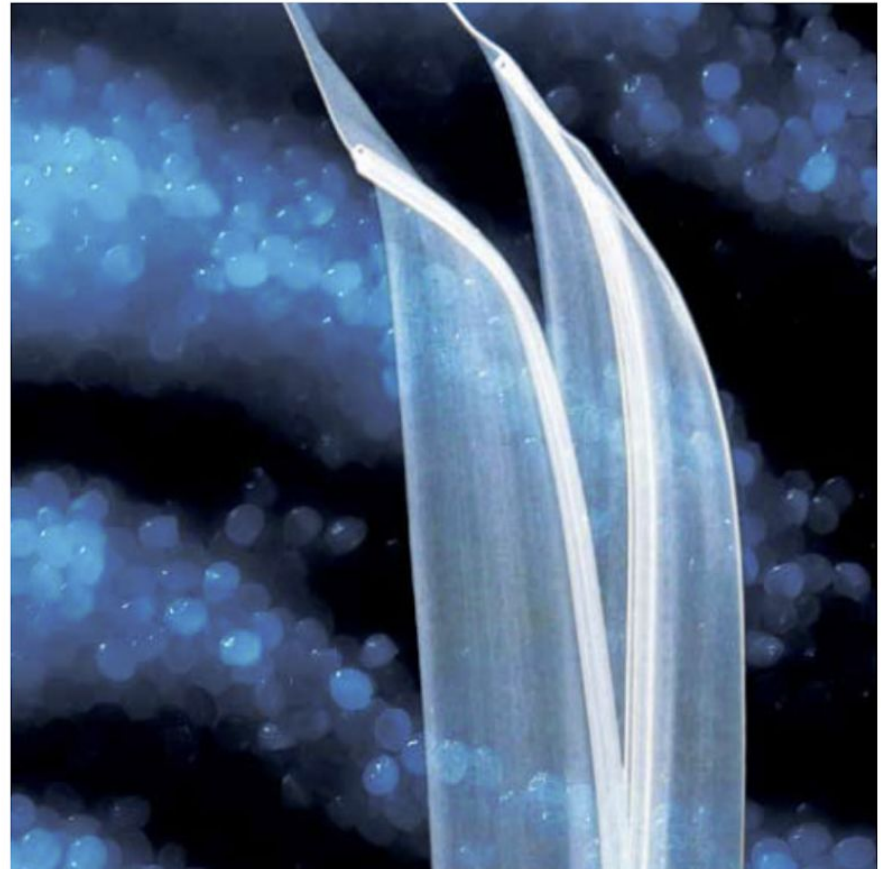




Product line offers more than 20

styles), anti-stat zippers or retort
bags designed to meet the opening

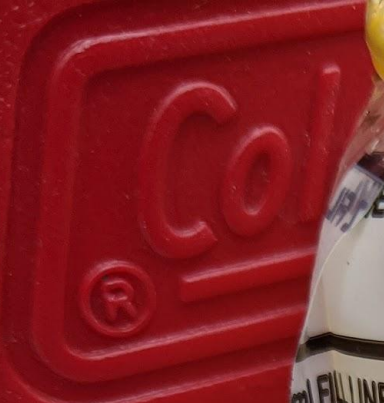
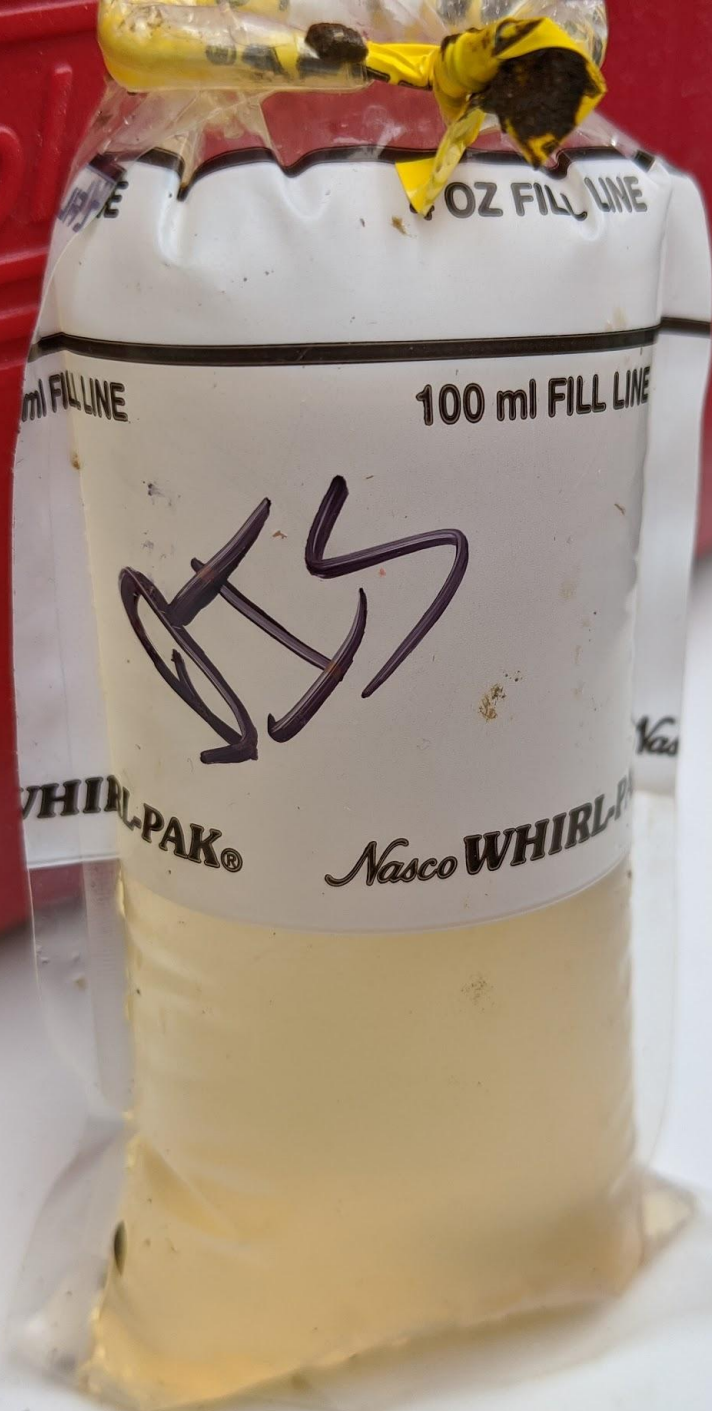
welding process by custom











100 ml FILL LINE

100 ml FILL LINE

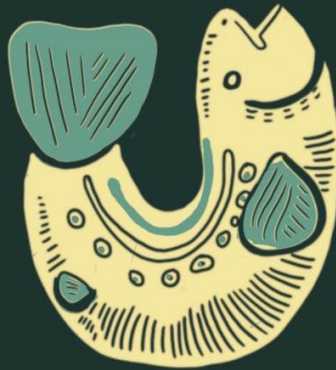
100 ml FILL LINE

Handwritten signature in purple ink

WHIRL-PAK®

Nasco WHIRL-PAK

DEFEND THE



MOUNTAIN
WATERSHED
ASSOCIATION